



# BEALE & COMPANY

---

The Beale & Company ethos is about delivering a friendly and approachable service, with the commitment that the needs of their clients come first – at every stage.

JAC GROUP



# KEY FACTS

## SIZE

14,200 sq ft

## SECTOR

Legal

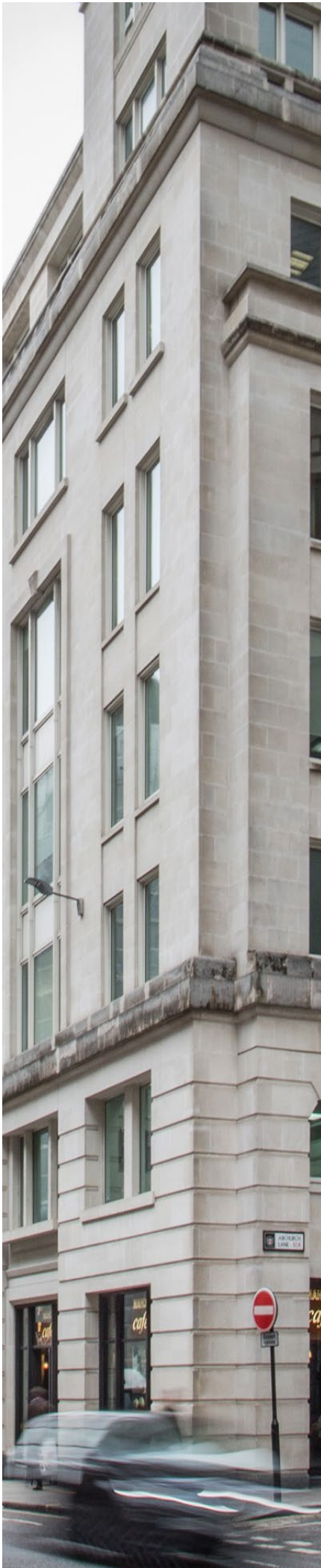
## LOCATION

Capital House, 85 King William Street,  
London EC4N 7BL

## SCOPE OF WORKS

Project Management  
Cost Consultancy  
Design  
Furniture Procurement

RECEPTION  
WAITING



---

## THE PROJECT

Beale & Company provide specialist legal experience in the specific business sectors of construction, engineering and infrastructure, insurance, professions and technology and were highly commended for the British Expertise 'Outstanding International Business Award (SME)' in 2014.

### PROJECT OVERVIEW

This project represented the third project managed by JAC at Capital House, 85 King William Street following on from a category-A reinstatement along with a category-B fit-out on behalf of Natixis, the corporate, investment, insurance and financial services arm of Groupe BPCE, the second-largest banking group in France.

### ABOUT THE BUILDING

Capital House is a prominent building located moments from the Bank of England. Completed in 2003, the building comprises approximately 110,000 sq ft of Grade A office accommodation arranged over basement, ground and 8 upper floors.

---







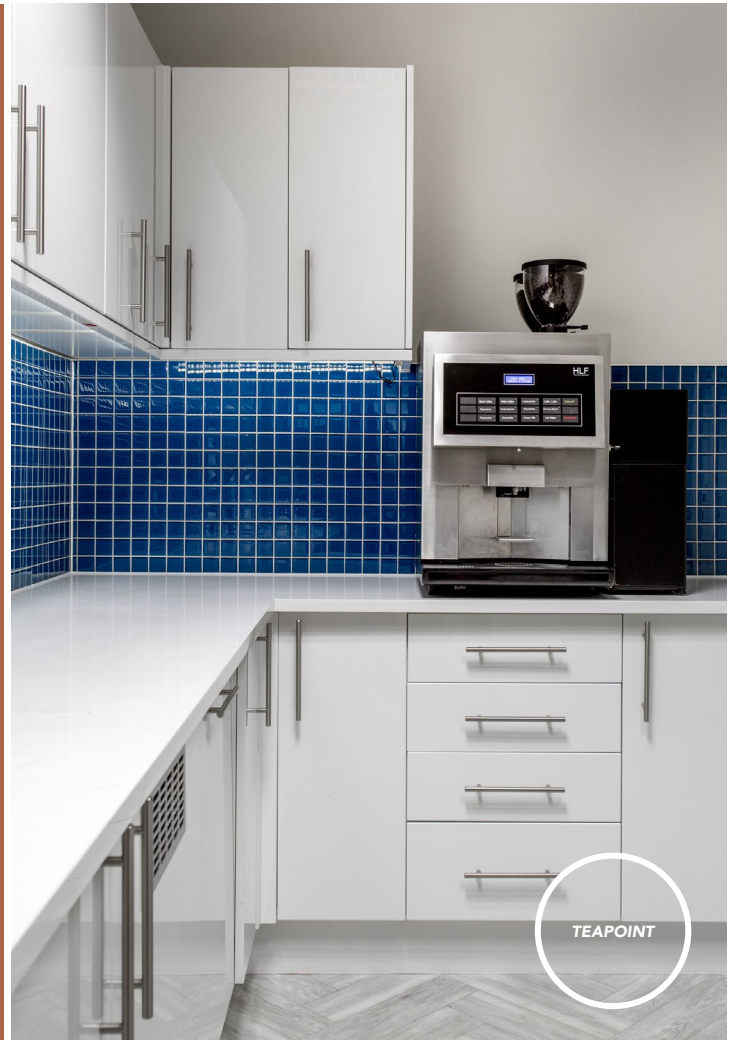


BREAKOUT  
& CORRIDOR

*"From the moment that we first met Beale & Company we knew that they would be a great team to work with. The project was able to realise significant financial benefits from a close coordination of the pre-existing fit-out, aligned with a clear design vision from our design studio."*

*The end result is testament to the hard work and many hours of detail expended by both the client and the professional team to bring together a strong financial and aesthetic result that will support Beale & Company for the foreseeable future."*

**Lawrence Mohiuddine, Lead Consultant  
JAC Group**



TEAPOINT





## JAC GROUP

JAC provides experienced project management expertise for office transformations. Independence, transparency and meticulous attention to detail is at the heart of our service. Working in collaboration with our design and furniture procurement team, we create beautiful, collaborative and flexible office interiors to help clients realise their workplace aspirations. After completion, our lifecycle team provides on-going client assistance.

## GET IN TOUCH

### **JAC Group**

Swan House, 81 Blythe Road  
London, W14 0HP

[info@jac-group.co.uk](mailto:info@jac-group.co.uk)

D + 44 (0)207 602 0700